

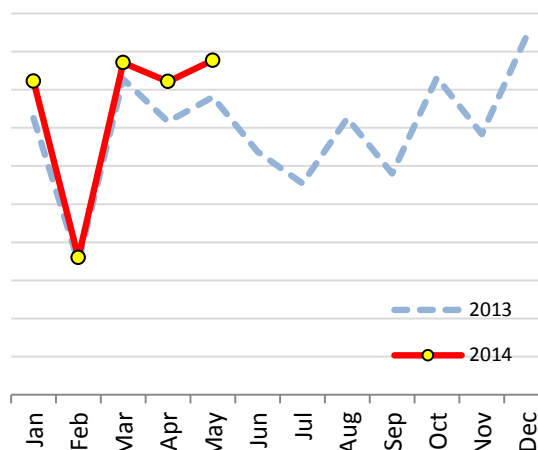
Production of Dairy products in the U.S.A.

Quantity in Tonnes

Source : USDA/NASS

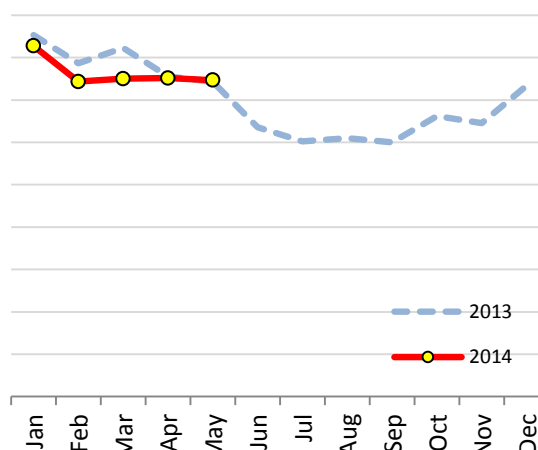
TOTAL CHEESE

| | 2013 | 2014 | var % |
|----------------------|------------------|------------------|---------------|
| January | 422 548 | 432 267 | + 2.3% |
| February | 384 864 | 385 967 | + 0.3% |
| March | 432 794 | 437 096 | + 1.0% |
| April | 421 630 | 432 140 | + 2.5% |
| May | 428 084 | 437 696 | + 2.2% |
| June | 413 716 | | |
| July | 405 418 | | |
| August | 422 563 | | |
| September | 408 021 | | |
| October | 433 221 | | |
| November | 418 380 | | |
| December | 444 153 | | |
| Total Jan-May | 2 089 919 | 2 125 166 | + 1.7% |
| Year Total | 5 035 390 | | |



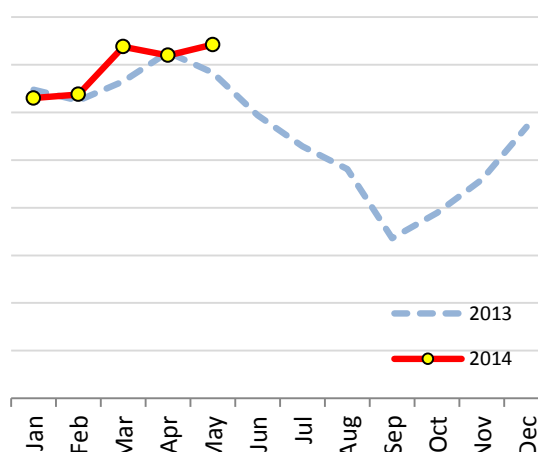
BUTTER

| | 2013 | 2014 | var % |
|----------------------|----------------|----------------|---------------|
| January | 85 292 | 82 755 | - 3.0% |
| February | 78 623 | 74 351 | - 5.4% |
| March | 82 291 | 75 022 | - 8.8% |
| April | 75 595 | 75 184 | - 0.5% |
| May | 74 292 | 74 669 | + 0.5% |
| June | 63 559 | | |
| July | 60 213 | | |
| August | 60 949 | | |
| September | 59 979 | | |
| October | 66 173 | | |
| November | 64 497 | | |
| December | 73 359 | | |
| Total Jan-May | 396 093 | 381 982 | - 3.6% |
| Year Total | 844 823 | | |



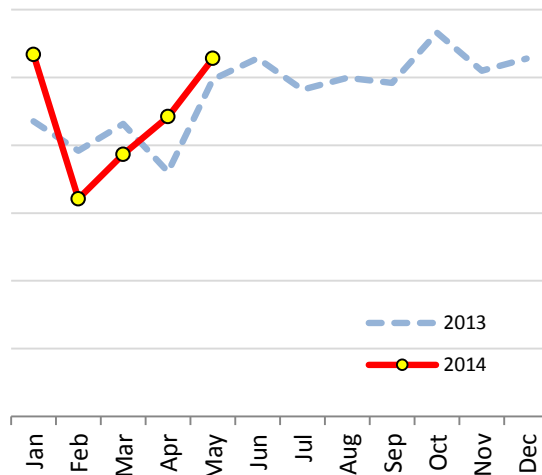
NONFAT DRY MILK, HUMAN

| | 2013 | 2014 | var % |
|----------------------|----------------|----------------|---------------|
| January | 64 773 | 62 985 | - 2.8% |
| February | 62 448 | 63 756 | + 2.1% |
| March | 66 486 | 73 776 | + 11.0% |
| April | 72 628 | 71 946 | - 0.9% |
| May | 68 280 | 74 218 | + 8.7% |
| June | 59 376 | | |
| July | 52 896 | | |
| August | 48 098 | | |
| September | 33 578 | | |
| October | 38 932 | | |
| November | 45 897 | | |
| December | 56 958 | | |
| Total Jan-May | 334 614 | 346 682 | + 3.6% |
| Year Total | 670 348 | | |



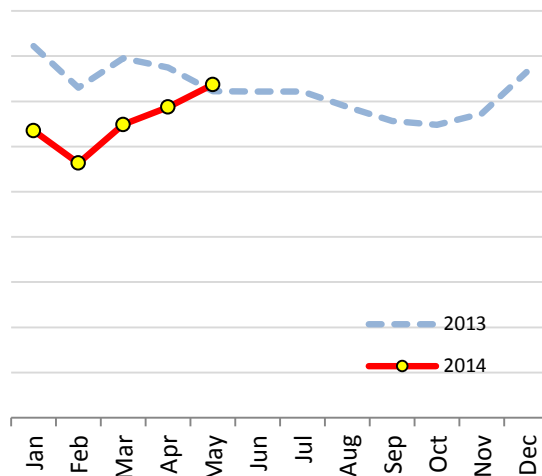
SKIM MILK POWDERS

| | 2013 | 2014 | var % |
|----------------------|----------------|----------------|---------------|
| January | 21 763 | 26 685 | + 22.6% |
| February | 19 585 | 16 050 | - 18.1% |
| March | 21 567 | 19 332 | - 10.4% |
| April | 18 031 | 22 096 | + 22.5% |
| May | 24 851 | 26 401 | + 6.2% |
| June | 26 407 | | |
| July | 24 100 | | |
| August | 24 981 | | |
| September | 24 600 | | |
| October | 28 305 | | |
| November | 25 504 | | |
| December | 26 382 | | |
| Total Jan-May | 105 797 | 110 564 | + 4.5% |
| Year Total | 286 076 | | |



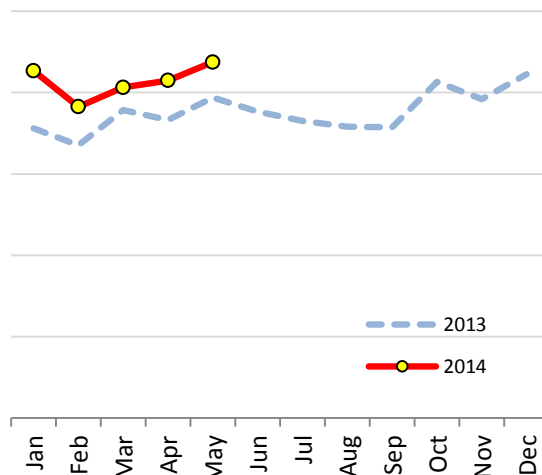
DRY WHEY, TOTAL

| | 2013 | 2014 | var % |
|----------------------|----------------|----------------|----------------|
| January | 41 124 | 31 756 | - 22.8% |
| February | 36 501 | 28 164 | - 22.8% |
| March | 39 749 | 32 434 | - 18.4% |
| April | 38 737 | 34 361 | - 11.3% |
| May | 36 130 | 36 859 | + 2.0% |
| June | 36 090 | | |
| July | 36 067 | | |
| August | 34 397 | | |
| September | 32 810 | | |
| October | 32 414 | | |
| November | 33 646 | | |
| December | 38 247 | | |
| Total Jan-May | 192 241 | 163 575 | - 14.9% |
| Year Total | 435 911 | | |



WHEY PROTEIN CONCENTRATE

| | 2013 | 2014 | var % |
|----------------------|----------------|----------------|----------------|
| January | 17 809 | 21 337 | + 19.8% |
| February | 16 756 | 19 130 | + 14.2% |
| March | 18 934 | 20 319 | + 7.3% |
| April | 18 323 | 20 741 | + 13.2% |
| May | 19 682 | 21 870 | + 11.1% |
| June | 18 825 | | |
| July | 18 264 | | |
| August | 17 899 | | |
| September | 17 865 | | |
| October | 20 658 | | |
| November | 19 592 | | |
| December | 21 122 | | |
| Total Jan-May | 91 504 | 103 397 | + 13.0% |
| Year Total | 225 729 | | |

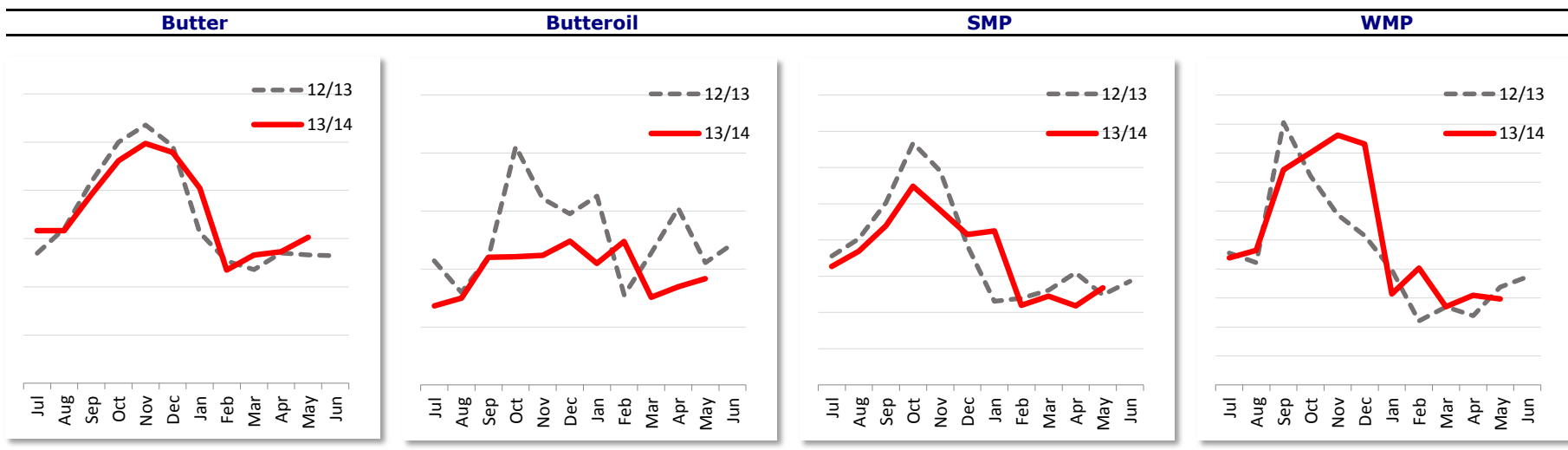


Production of Dairy products in AUSTRALIA

Source : Dairy Australia Limited

in Tonnes

| | Butter | | | | Butteroil | | | | SMP | | | | WMP | | |
|---------------|--------|--------|---------|--|-----------|--------|---------|--|---------|---------|---------|--|---------|---------|---------|
| | 12/13 | 13/14 | Var% | | 12/13 | 13/14 | Var% | | 12/13 | 13/14 | Var% | | 12/13 | 13/14 | Var% |
| July | 5 392 | 6 326 | + 17.3% | | 1 071 | 683 | - 36.2% | | 17 786 | 16 351 | - 8.1% | | 9 112 | 8 763 | - 3.8% |
| August | 6 422 | 6 334 | - 1.4% | | 799 | 750 | - 6.2% | | 20 155 | 18 474 | - 8.3% | | 8 438 | 9 294 | + 10.1% |
| September | 8 354 | 7 822 | - 6.4% | | 1 106 | 1 100 | - 0.5% | | 25 138 | 21 999 | - 12.5% | | 18 107 | 14 844 | - 18.0% |
| October | 9 992 | 9 227 | - 7.7% | | 2 055 | 1 106 | - 46.2% | | 33 391 | 27 432 | - 17.8% | | 14 426 | 16 033 | + 11.1% |
| November | 10 715 | 9 947 | - 7.2% | | 1 609 | 1 118 | - 30.5% | | 29 518 | 24 142 | - 18.2% | | 11 757 | 17 236 | + 46.6% |
| December | 9 835 | 9 575 | - 2.7% | | 1 476 | 1 240 | - 16.0% | | 19 287 | 20 755 | + 7.6% | | 10 294 | 16 634 | + 61.6% |
| January | 6 251 | 8 097 | + 29.5% | | 1 629 | 1 048 | - 35.7% | | 11 554 | 21 270 | + 84.1% | | 7 925 | 6 287 | - 20.7% |
| February | 5 066 | 4 692 | - 7.4% | | 777 | 1 238 | + 59.3% | | 11 949 | 10 998 | - 8.0% | | 4 413 | 8 060 | + 82.6% |
| March | 4 711 | 5 314 | + 12.8% | | 1 136 | 757 | - 33.4% | | 13 070 | 12 242 | - 6.3% | | 5 396 | 5 408 | + 0.2% |
| April | 5 400 | 5 450 | + 0.9% | | 1 523 | 848 | - 44.3% | | 15 490 | 10 923 | - 29.5% | | 4 772 | 6 179 | + 29.5% |
| May | 5 328 | 6 056 | + 13.7% | | 1 056 | 917 | - 13.2% | | 12 410 | 13 420 | + 8.1% | | 6 746 | 5 942 | - 11.9% |
| June | 5 286 | | | | 1 215 | | | | 14 312 | | | | 7 454 | | |
| Total Jul-May | 77 467 | 78 839 | + 1.8% | | 14 236 | 10 805 | - 24.1% | | 209 749 | 198 008 | - 5.6% | | 101 385 | 114 681 | + 13.1% |
| Year Total | 82 753 | | | | 15 450 | | | | 224 061 | | | | 108 838 | | |



Production of Dairy products in AUSTRALIA

Source : Dairy Australia Limited

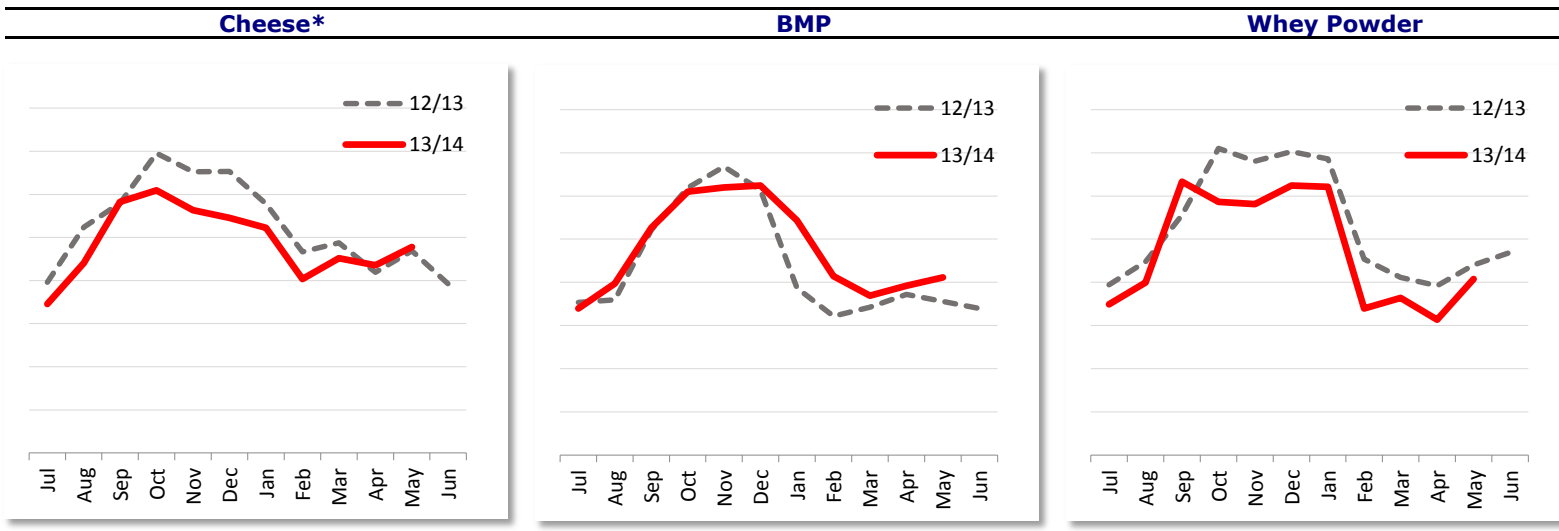
in Tonnes

| | Cheese* | | |
|---------------|---------|---------|---------|
| | 12/13 | 13/14 | Var% |
| July | 19 806 | 17 270 | - 12.8% |
| August | 26 202 | 22 043 | - 15.9% |
| September | 28 971 | 29 136 | + 0.6% |
| October | 34 773 | 30 459 | - 12.4% |
| November | 32 601 | 28 160 | - 13.6% |
| December | 32 669 | 27 287 | - 16.5% |
| January | 28 888 | 26 124 | - 9.6% |
| February | 23 331 | 20 186 | - 13.5% |
| March | 24 393 | 22 592 | - 7.4% |
| April | 20 966 | 21 767 | + 3.8% |
| May | 23 433 | 23 882 | + 1.9% |
| June | 19 631 | | |
| Total Jul-May | 296 032 | 268 905 | - 9.2% |
| Year Total | 315 663 | | |

| | BMP | | |
|---------------|--------|--------|---------|
| | 12/13 | 13/14 | Var% |
| July | 707 | 679 | - 3.9% |
| August | 719 | 795 | + 10.5% |
| September | 1 042 | 1 052 | + 1.0% |
| October | 1 238 | 1 220 | - 1.5% |
| November | 1 335 | 1 240 | - 7.1% |
| December | 1 228 | 1 248 | + 1.6% |
| January | 774 | 1 087 | + 40.4% |
| February | 644 | 829 | + 28.7% |
| March | 685 | 738 | + 7.7% |
| April | 744 | 784 | + 5.4% |
| May | 711 | 823 | + 15.7% |
| June | 679 | | |
| Total Jul-May | 9 827 | 10 495 | + 6.8% |
| Year Total | 10 506 | | |

| | Whey Powder | | |
|---------------|-------------|--------|---------|
| | 12/13 | 13/14 | Var% |
| July | 3 944 | 3 491 | - 11.5% |
| August | 4 477 | 3 996 | - 10.8% |
| September | 5 561 | 6 334 | + 13.9% |
| October | 7 100 | 5 866 | - 17.4% |
| November | 6 808 | 5 815 | - 14.6% |
| December | 7 025 | 6 242 | - 11.1% |
| January | 6 860 | 6 208 | - 9.5% |
| February | 4 539 | 3 395 | - 25.2% |
| March | 4 113 | 3 637 | - 11.6% |
| April | 3 920 | 3 133 | - 20.1% |
| May | 4 405 | 4 080 | - 7.4% |
| June | 4 690 | | |
| Total Jul-May | 58 750 | 52 198 | - 11.2% |
| Year Total | 63 440 | | |

* Cheese figures are adjusted for this report until production figures from smaller manufacturers are received



Dairy productions of the main producing countries (per product)

note : 2013 : preliminary figures, 2014 : forecast

Source : USDA

Quantity in 1000 Tonnes

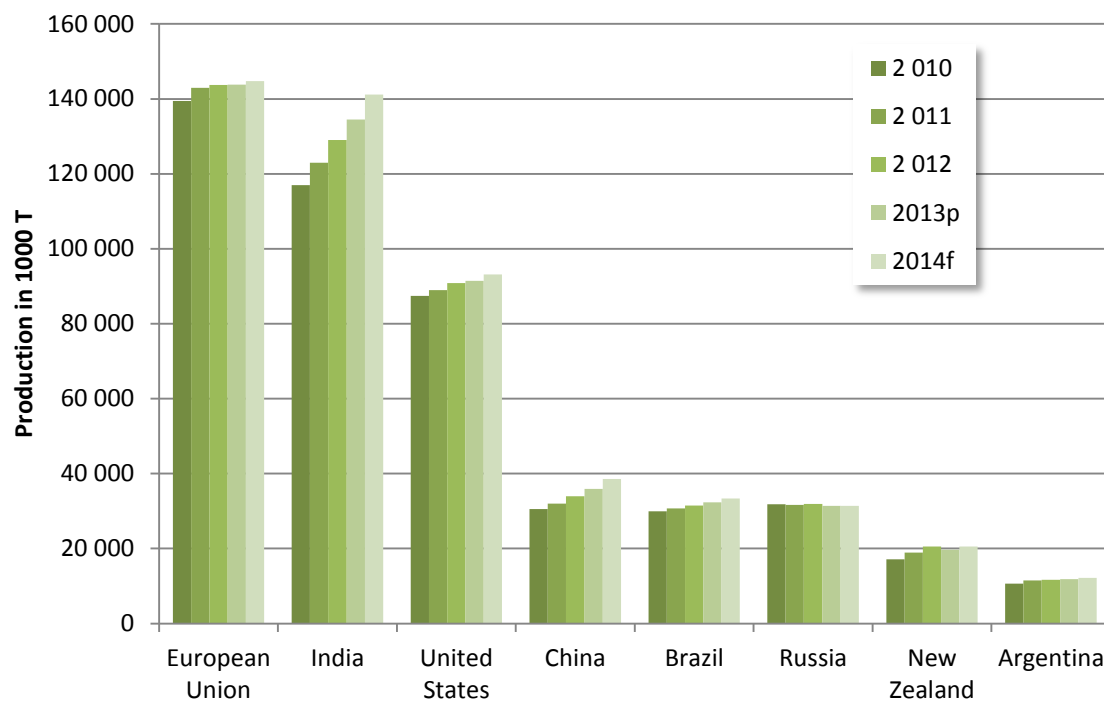
| Products | 2 010 | 2 011 | 2 012 | 2013p | 2014f | % 2014/13 |
|-------------------------------------|----------------|----------------|----------------|----------------|----------------|--------------|
| Dairy, Milk, Fluid | | | | | | |
| European Union | 139 492 | 142 920 | 143 750 | 143 850 | 144 750 | ➡ + 1% |
| India | 117 000 | 123 000 | 129 000 | 134 500 | 141 125 | ➡ + 5% |
| United States | 87 474 | 88 978 | 90 824 | 91 444 | 93 123 | ➡ + 2% |
| China | 30 528 | 31 980 | 33 960 | 35 950 | 38 550 | ⬆ + 7% |
| Brazil | 29 948 | 30 715 | 31 490 | 32 380 | 33 375 | ➡ + 3% |
| Russia | 31 847 | 31 646 | 31 917 | 31 400 | 31 400 | ➡ + 0% |
| New Zealand | 17 173 | 18 965 | 20 567 | 19 678 | 20 569 | ➡ + 5% |
| Argentina | 10 600 | 11 470 | 11 679 | 11 796 | 12 209 | ➡ + 4% |
| Ukraine | 11 249 | 11 085 | 11 378 | 11 470 | 11 540 | ➡ + 1% |
| Mexico | 11 201 | 11 213 | 11 434 | 11 421 | 11 502 | ➡ + 1% |
| Australia | 9 327 | 9 568 | 9 811 | 9 570 | 9 880 | ➡ + 3% |
| Canada | 8 350 | 8 400 | 8 614 | 8 535 | 8 450 | ➡ - 1% |
| Japan | 7 721 | 7 474 | 7 631 | 7 560 | 7 580 | ➡ + 0% |
| Korea, South | 2 073 | 1 888 | 2 111 | 2 153 | 2 196 | ➡ + 2% |
| Total for selected countries | 513 983 | 529 302 | 544 166 | 551 707 | 566 249 | ➡ + 3% |
| Dairy, Butter | | | | | | |
| India | 4 162 | 4 330 | 4 525 | 4 745 | 4 887 | ➡ + 3% |
| European Union | 1 980 | 2 055 | 2 100 | 2 090 | 2 100 | ➡ + 0% |
| United States | 709 | 821 | 843 | 852 | 865 | ➡ + 2% |
| New Zealand | 441 | 487 | 527 | 506 | 525 | ➡ + 4% |
| Russia | 207 | 217 | 216 | 205 | 200 | ➡ - 2% |
| Mexico | 182 | 187 | 190 | 185 | 185 | ➡ + 0% |
| Australia | 132 | 121 | 119 | 117 | 122 | ➡ + 4% |
| Ukraine | 79 | 76 | 88 | 90 | 92 | ➡ + 2% |
| Canada | 80 | 85 | 98 | 92 | 88 | ➡ - 4% |
| Brazil | 78 | 79 | 81 | 83 | 85 | ➡ + 2% |
| Japan | 74 | 63 | 69 | 71 | 73 | ➡ + 3% |
| Argentina | 55 | 63 | 58 | 60 | 62 | ➡ + 3% |
| Total for selected countries | 8 179 | 8 584 | 8 914 | 9 096 | 9 284 | ➡ + 2% |

| Dairy, Cheese | | | | | | |
|-------------------------------------|---------------|---------------|---------------|---------------|---------------|--------|
| European Union | 8 959 | 8 981 | 9 142 | 9 175 | 9 250 | ➡ + 1% |
| United States | 4 737 | 4 806 | 4 940 | 5 035 | 5 115 | ➡ + 2% |
| Brazil | 648 | 679 | 700 | 722 | 736 | ➡ + 2% |
| Argentina | 540 | 572 | 564 | 570 | 589 | ➡ + 3% |
| Canada | 297 | 300 | 549 | 550 | 545 | ➡ - 1% |
| Russia | 438 | 425 | 446 | 420 | 425 | ➡ + 1% |
| Australia | 319 | 339 | 330 | 329 | 360 | ⬆ + 9% |
| New Zealand | 268 | 300 | 321 | 314 | 320 | ➡ + 2% |
| Mexico | 264 | 270 | 264 | 270 | 270 | ➡ + 0% |
| Ukraine | 212 | 185 | 145 | 147 | 150 | ➡ + 2% |
| Japan | 48 | 45 | 47 | 47 | 48 | ➡ + 2% |
| Korea, South | 27 | 25 | 23 | 27 | 27 | ➡ + 0% |
| Total for selected countries | 16 757 | 16 927 | 17 471 | 17 606 | 17 835 | ➡ + 1% |

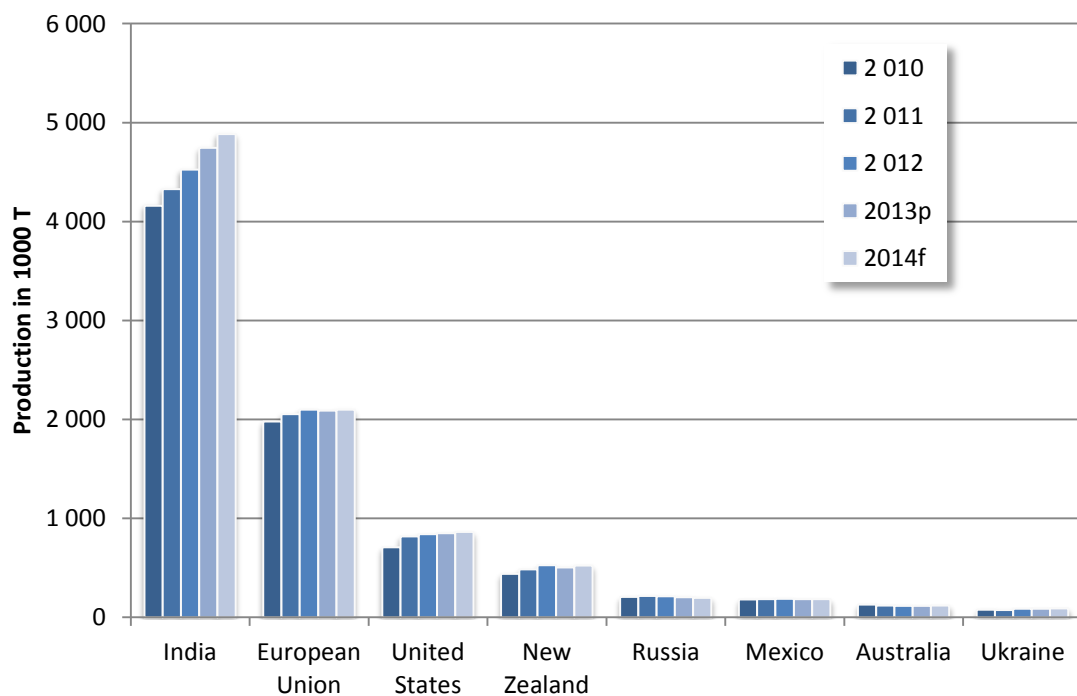
| Dairy, Dry Whole Milk Powder | | | | | | |
|-------------------------------------|--------------|--------------|--------------|--------------|--------------|--------|
| New Zealand | 947 | 1 162 | 1 273 | 1 275 | 1 300 | ➡ + 2% |
| China | 1 030 | 1 100 | 1 160 | 1 220 | 1 300 | ⬆ + 7% |
| European Union | 780 | 685 | 660 | 645 | 650 | ➡ + 1% |
| Brazil | 500 | 515 | 531 | 549 | 560 | ➡ + 2% |
| Argentina | 210 | 309 | 281 | 284 | 294 | ➡ + 4% |
| Mexico | 173 | 168 | 150 | 150 | 150 | ➡ + 0% |
| Australia | 147 | 148 | 120 | 120 | 130 | ⬆ + 8% |
| Chile | 63 | 73 | 74 | 75 | 75 | ➡ + 0% |
| Russia | 40 | 76 | 67 | 60 | 60 | ➡ + 0% |
| United States | 32 | 30 | 26 | 34 | 35 | ➡ + 3% |
| Ukraine | 15 | 10 | 11 | 11 | 11 | ➡ + 0% |
| Afghanistan | | 0 | 0 | 0 | 0 | - |
| Total for selected countries | 3 937 | 4 276 | 4 353 | 4 423 | 4 565 | ➡ + 3% |

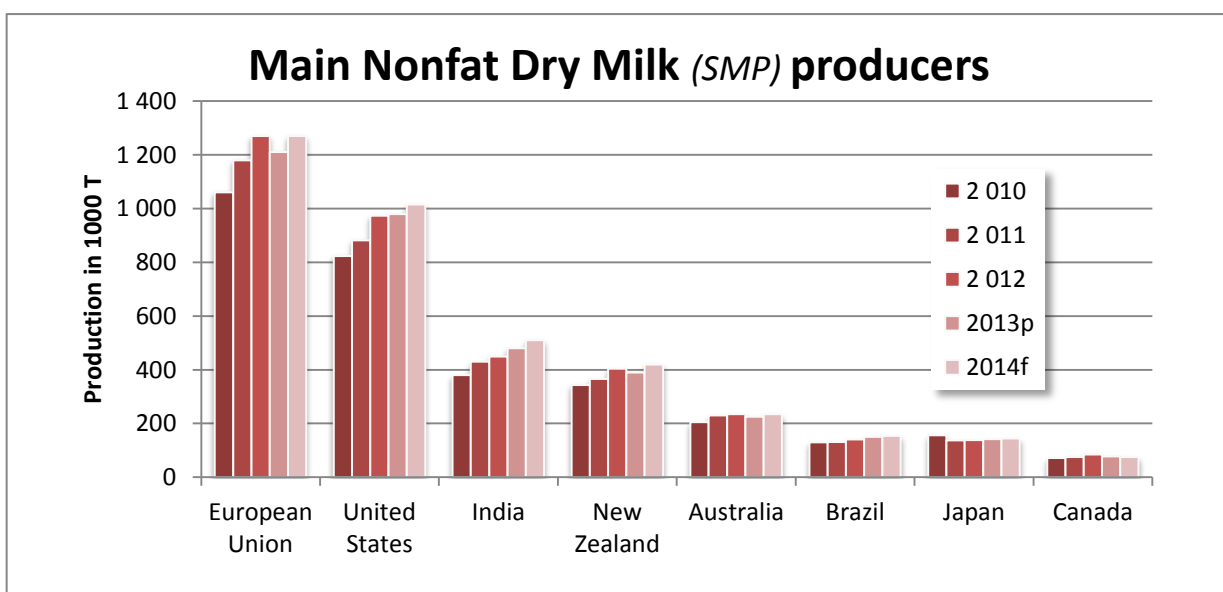
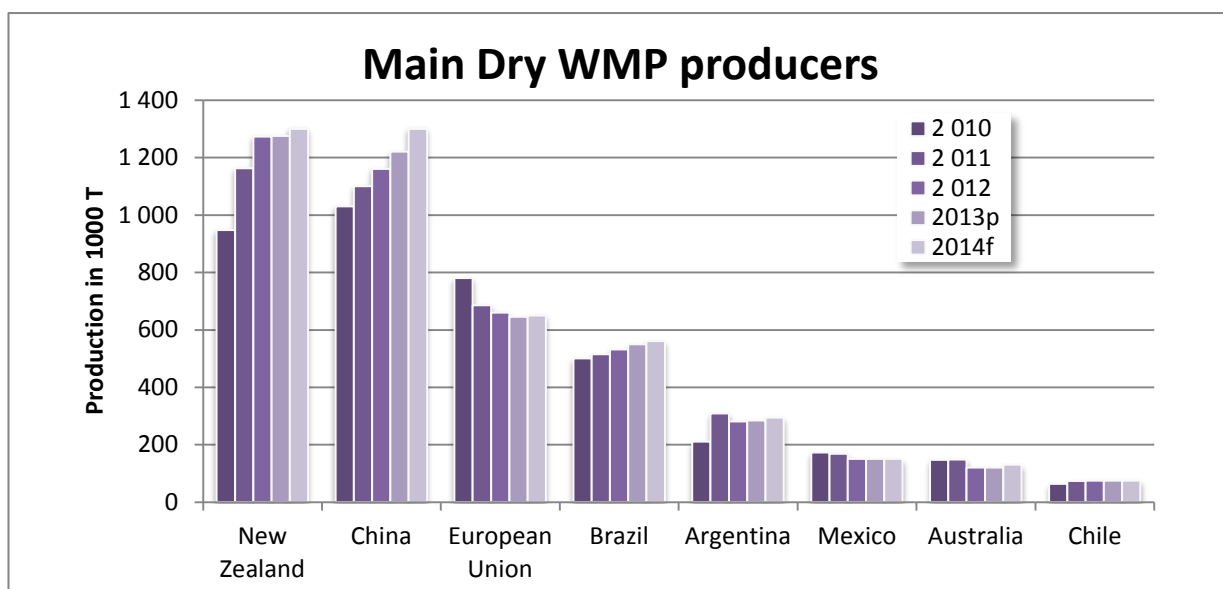
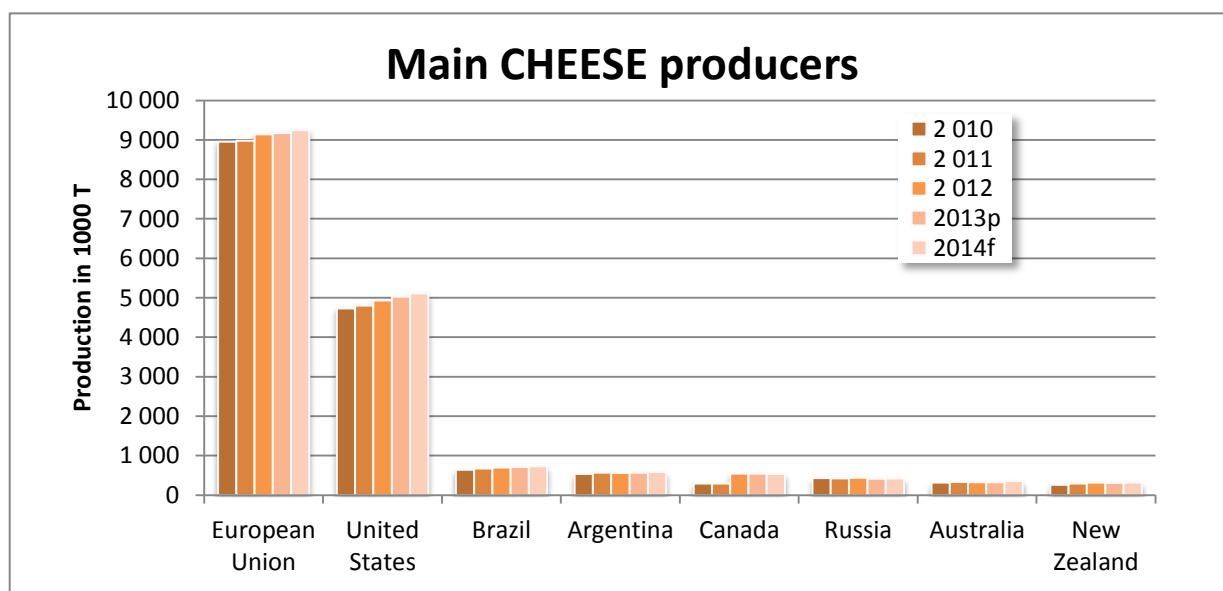
| Dairy, Milk, Nonfat Dry | | | | | | |
|-------------------------------------|--------------|--------------|--------------|--------------|--------------|--------|
| European Union | 1 060 | 1 180 | 1 270 | 1 210 | 1 270 | ➡ + 5% |
| United States | 824 | 882 | 973 | 979 | 1 015 | ➡ + 4% |
| India | 380 | 430 | 450 | 480 | 510 | ⬆ + 6% |
| New Zealand | 344 | 366 | 404 | 390 | 420 | ⬆ + 8% |
| Australia | 205 | 230 | 235 | 225 | 235 | ➡ + 4% |
| Brazil | 130 | 132 | 141 | 151 | 154 | ➡ + 2% |
| Japan | 156 | 137 | 139 | 142 | 145 | ➡ + 2% |
| Canada | 72 | 76 | 85 | 78 | 76 | ➡ - 3% |
| Mexico | 13 | 26 | 55 | 55 | 55 | ➡ + 0% |
| Ukraine | 53 | 43 | 52 | 52 | 52 | ➡ + 0% |
| China | 55 | 56 | 57 | 54 | 51 | ⬇ - 6% |
| Russia | 42 | 55 | 57 | 50 | 50 | ➡ + 0% |
| Argentina | 35 | 39 | 32 | 32 | 33 | ➡ + 3% |
| Chile | 19 | 19 | 19 | 19 | 19 | ➡ + 0% |
| Korea, South | 10 | 4 | 14 | 12 | 12 | ➡ + 0% |
| Total for selected countries | 3 398 | 3 675 | 3 983 | 3 929 | 4 097 | ➡ + 4% |

Main MILK producers



Main BUTTER producers





Dairy productions of the main producing countries (per country)

note : 2013 : preliminary figures, 2014 : forecast

Source : USDA

| Source : USDA | | Quantity in 1000 Tonnes | | | | | | | |
|------------------------------|---------|-------------------------|---------|---------|---------|--------|-----------|-----------|--|
| Products | 2 010 | 2 011 | 2 012 | 2013p | 2014f | | % 2014/13 | % 2014/10 | |
| European Union | | | | | | | | | |
| Dairy, Milk, Fluid | 139 492 | 142 920 | 143 750 | 143 850 | 144 750 | ➡ + 1% | ➡ + 4% | | |
| Dairy, Butter | 1 980 | 2 055 | 2 100 | 2 090 | 2 100 | ➡ + 0% | ⬆ + 6% | | |
| Dairy, Milk, Nonfat Dry | 1 060 | 1 180 | 1 270 | 1 210 | 1 270 | ➡ + 5% | ⬆ + 20% | | |
| Dairy, Cheese | 8 959 | 8 981 | 9 142 | 9 175 | 9 250 | ➡ + 1% | ➡ + 3% | | |
| Dairy, Dry Whole Milk Powder | 780 | 685 | 660 | 645 | 650 | ➡ + 1% | ⬇ - 17% | | |
| | | | | | | | | | |
| India | | | | | | | | | |
| Dairy, Milk, Fluid | 117 000 | 123 000 | 129 000 | 134 500 | 141 125 | ➡ + 5% | ⬆ + 21% | | |
| Dairy, Butter | 4 162 | 4 330 | 4 525 | 4 745 | 4 887 | ➡ + 3% | ⬆ + 17% | | |
| Dairy, Milk, Nonfat Dry | 380 | 430 | 450 | 480 | 510 | ⬆ + 6% | ⬆ + 34% | | |
| | | | | | | | | | |
| United States | | | | | | | | | |
| Dairy, Milk, Fluid | 87 474 | 88 978 | 90 824 | 91 444 | 93 123 | ➡ + 2% | ⬆ + 6% | | |
| Dairy, Butter | 709 | 821 | 843 | 852 | 865 | ➡ + 2% | ⬆ + 22% | | |
| Dairy, Milk, Nonfat Dry | 824 | 882 | 973 | 979 | 1 015 | ➡ + 4% | ⬆ + 23% | | |
| Dairy, Cheese | 4 737 | 4 806 | 4 940 | 5 035 | 5 115 | ➡ + 2% | ⬆ + 8% | | |
| Dairy, Dry Whole Milk Powder | 32 | 30 | 26 | 34 | 35 | ➡ + 3% | ⬆ + 9% | | |
| | | | | | | | | | |
| China | | | | | | | | | |
| Dairy, Milk, Fluid | 30 528 | 31 980 | 33 960 | 35 950 | 38 550 | ⬆ + 7% | ⬆ + 26% | | |
| Dairy, Milk, Nonfat Dry | 55 | 56 | 57 | 54 | 51 | ⬇ - 6% | ⬇ - 7% | | |
| Dairy, Dry Whole Milk Powder | 1 030 | 1 100 | 1 160 | 1 220 | 1 300 | ⬆ + 7% | ⬆ + 26% | | |
| | | | | | | | | | |
| Brazil | | | | | | | | | |
| Dairy, Milk, Fluid | 29 948 | 30 715 | 31 490 | 32 380 | 33 375 | ➡ + 3% | ⬆ + 11% | | |
| Dairy, Butter | 78 | 79 | 81 | 83 | 85 | ➡ + 2% | ⬆ + 9% | | |
| Dairy, Milk, Nonfat Dry | 130 | 132 | 141 | 151 | 154 | ➡ + 2% | ⬆ + 18% | | |
| Dairy, Cheese | 648 | 679 | 700 | 722 | 736 | ➡ + 2% | ⬆ + 14% | | |
| Dairy, Dry Whole Milk Powder | 500 | 515 | 531 | 549 | 560 | ➡ + 2% | ⬆ + 12% | | |
| | | | | | | | | | |
| Russia | | | | | | | | | |
| Dairy, Milk, Fluid | 31 847 | 31 646 | 31 917 | 31 400 | 31 400 | ➡ + 0% | ➡ - 1% | | |
| Dairy, Butter | 207 | 217 | 216 | 205 | 200 | ➡ - 2% | ➡ - 3% | | |

| Products | 2 010 | 2 011 | 2 012 | 2013p | 2014f | % 2014/13 | % 2014/10 | |
|------------------------------|-------|-------|-------|-------|-------|--------------|--------------|--|
| Dairy, Milk, Nonfat Dry | 42 | 55 | 57 | 50 | 50 | ↗ + 0% | ↗ + 19% | |
| Dairy, Cheese | 438 | 425 | 446 | 420 | 425 | ↗ + 1% | ↘ - 3% | |
| Dairy, Dry Whole Milk Powder | 40 | 76 | 67 | 60 | 60 | ↗ + 0% | ↗ + 50% | |

New Zealand

| | | | | | | | | |
|------------------------------|--------|--------|--------|--------|--------|--------|---------|--|
| Dairy, Milk, Fluid | 17 173 | 18 965 | 20 567 | 19 678 | 20 569 | ↗ + 5% | ↗ + 20% | |
| Dairy, Butter | 441 | 487 | 527 | 506 | 525 | ↗ + 4% | ↗ + 19% | |
| Dairy, Milk, Nonfat Dry | 344 | 366 | 404 | 390 | 420 | ↗ + 8% | ↗ + 22% | |
| Dairy, Cheese | 268 | 300 | 321 | 314 | 320 | ↗ + 2% | ↗ + 19% | |
| Dairy, Dry Whole Milk Powder | 947 | 1 162 | 1 273 | 1 275 | 1 300 | ↗ + 2% | ↗ + 37% | |

Argentina

| | | | | | | | | |
|------------------------------|--------|--------|--------|--------|--------|--------|---------|--|
| Dairy, Milk, Fluid | 10 600 | 11 470 | 11 679 | 11 796 | 12 209 | ↗ + 4% | ↗ + 15% | |
| Dairy, Butter | 55 | 63 | 58 | 60 | 62 | ↗ + 3% | ↗ + 13% | |
| Dairy, Milk, Nonfat Dry | 35 | 39 | 32 | 32 | 33 | ↗ + 3% | ↘ - 6% | |
| Dairy, Cheese | 540 | 572 | 564 | 570 | 589 | ↗ + 3% | ↗ + 9% | |
| Dairy, Dry Whole Milk Powder | 210 | 309 | 281 | 284 | 294 | ↗ + 4% | ↗ + 40% | |

Mexico

| | | | | | | | | |
|------------------------------|--------|--------|--------|--------|--------|--------|---------|--|
| Dairy, Milk, Fluid | 11 201 | 11 213 | 11 434 | 11 421 | 11 502 | ↗ + 1% | ↗ + 3% | |
| Dairy, Butter | 182 | 187 | 190 | 185 | 185 | ↗ + 0% | ↗ + 2% | |
| Dairy, Milk, Nonfat Dry | 13 | 26 | 55 | 55 | 55 | ↗ + 0% | +++ | |
| Dairy, Cheese | 264 | 270 | 264 | 270 | 270 | ↗ + 0% | ↗ + 2% | |
| Dairy, Dry Whole Milk Powder | 173 | 168 | 150 | 150 | 150 | ↗ + 0% | ↘ - 13% | |

Ukraine


| | | | | | | | | |
|------------------------------|--------|--------|--------|--------|--------|--------|---------|--|
| Dairy, Milk, Fluid | 11 249 | 11 085 | 11 378 | 11 470 | 11 540 | ↗ + 1% | ↗ + 3% | |
| Dairy, Butter | 79 | 76 | 88 | 90 | 92 | ↗ + 2% | ↗ + 16% | |
| Dairy, Milk, Nonfat Dry | 53 | 43 | 52 | 52 | 52 | ↗ + 0% | ↘ - 2% | |
| Dairy, Cheese | 212 | 185 | 145 | 147 | 150 | ↗ + 2% | ↘ - 29% | |
| Dairy, Dry Whole Milk Powder | 15 | 10 | 11 | 11 | 11 | ↗ + 0% | ↘ - 27% | |

Australia

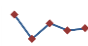
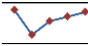
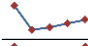
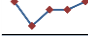
| | | | | | | | | |
|------------------------------|-------|-------|-------|-------|-------|--------|---------|--|
| Dairy, Milk, Fluid | 9 327 | 9 568 | 9 811 | 9 570 | 9 880 | ↗ + 3% | ↗ + 6% | |
| Dairy, Butter | 132 | 121 | 119 | 117 | 122 | ↗ + 4% | ↘ - 8% | |
| Dairy, Milk, Nonfat Dry | 205 | 230 | 235 | 225 | 235 | ↗ + 4% | ↗ + 15% | |
| Dairy, Cheese | 319 | 339 | 330 | 329 | 360 | ↗ + 9% | ↗ + 13% | |
| Dairy, Dry Whole Milk Powder | 147 | 148 | 120 | 120 | 130 | ↗ + 8% | ↘ - 12% | |

Canada




| | | | | | | | | |
|-------------------------|-------|-------|-------|-------|-------|--------|---------|--|
| Dairy, Milk, Fluid | 8 350 | 8 400 | 8 614 | 8 535 | 8 450 | ↗ - 1% | ↗ + 1% | |
| Dairy, Butter | 80 | 85 | 98 | 92 | 88 | ↘ - 4% | ↗ + 10% | |
| Dairy, Milk, Nonfat Dry | 72 | 76 | 85 | 78 | 76 | ↘ - 3% | ↗ + 6% | |

| Products | 2 010 | 2 011 | 2 012 | 2013p | 2014f | % 2014/13 | % 2014/10 | |
|---------------|-------|-------|-------|-------|-------|--------------|--------------|---|
| Dairy, Cheese | 297 | 300 | 549 | 550 | 545 | ➡ - 1% | ⬆ + 84% |  |


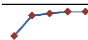
Japan

| | | | | | | | | |
|-------------------------|-------|-------|-------|-------|-------|--------|--------|---|
| Dairy, Milk, Fluid | 7 721 | 7 474 | 7 631 | 7 560 | 7 580 | ➡ + 0% | ➡ - 2% |  |
| Dairy, Butter | 74 | 63 | 69 | 71 | 73 | ➡ + 3% | ➡ - 1% |  |
| Dairy, Milk, Nonfat Dry | 156 | 137 | 139 | 142 | 145 | ➡ + 2% | ⬇ - 7% |  |
| Dairy, Cheese | 48 | 45 | 47 | 47 | 48 | ➡ + 2% | ➡ + 0% |  |

Korea, South

| | | | | | | | | |
|-------------------------|-------|-------|-------|-------|-------|--------|---------|---|
| Dairy, Milk, Fluid | 2 073 | 1 888 | 2 111 | 2 153 | 2 196 | ➡ + 2% | ⬆ + 6% |  |
| Dairy, Milk, Nonfat Dry | 10 | 4 | 14 | 12 | 12 | ➡ + 0% | ⬆ + 20% |  |
| Dairy, Cheese | 27 | 25 | 23 | 27 | 27 | ➡ + 0% | ➡ + 0% |  |

Chile

| | | | | | | | | |
|------------------------------|----|----|----|----|----|--------|---------|---|
| Dairy, Milk, Nonfat Dry | 19 | 19 | 19 | 19 | 19 | ➡ + 0% | ➡ + 0% |  |
| Dairy, Dry Whole Milk Powder | 63 | 73 | 74 | 75 | 75 | ➡ + 0% | ⬆ + 19% |  |